

RSA CEC 7th Report

01 September 2022

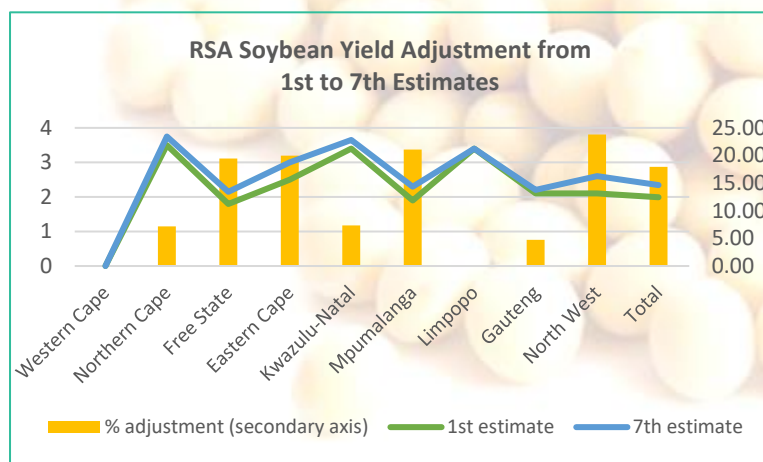
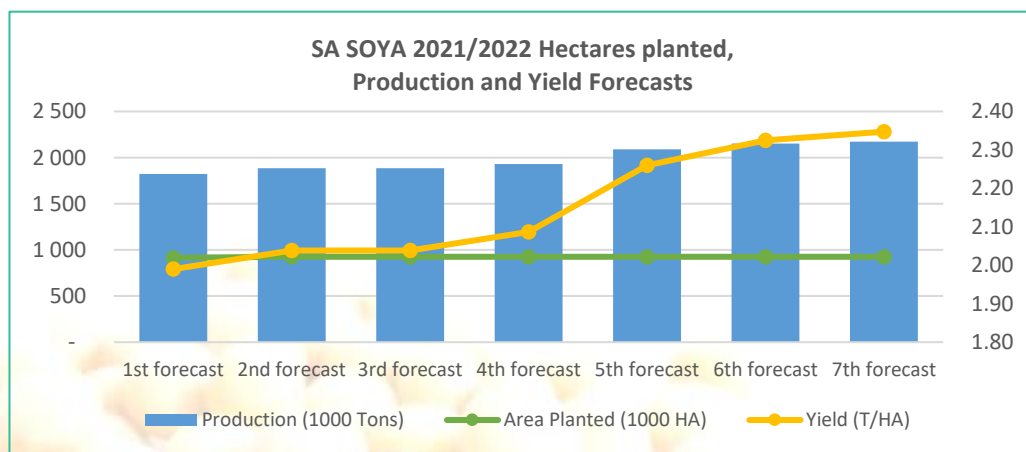


SUMMARY – 7th Crop Estimate Report for South African Grain, Oilseed & Cereal Production released on 30 August 2022

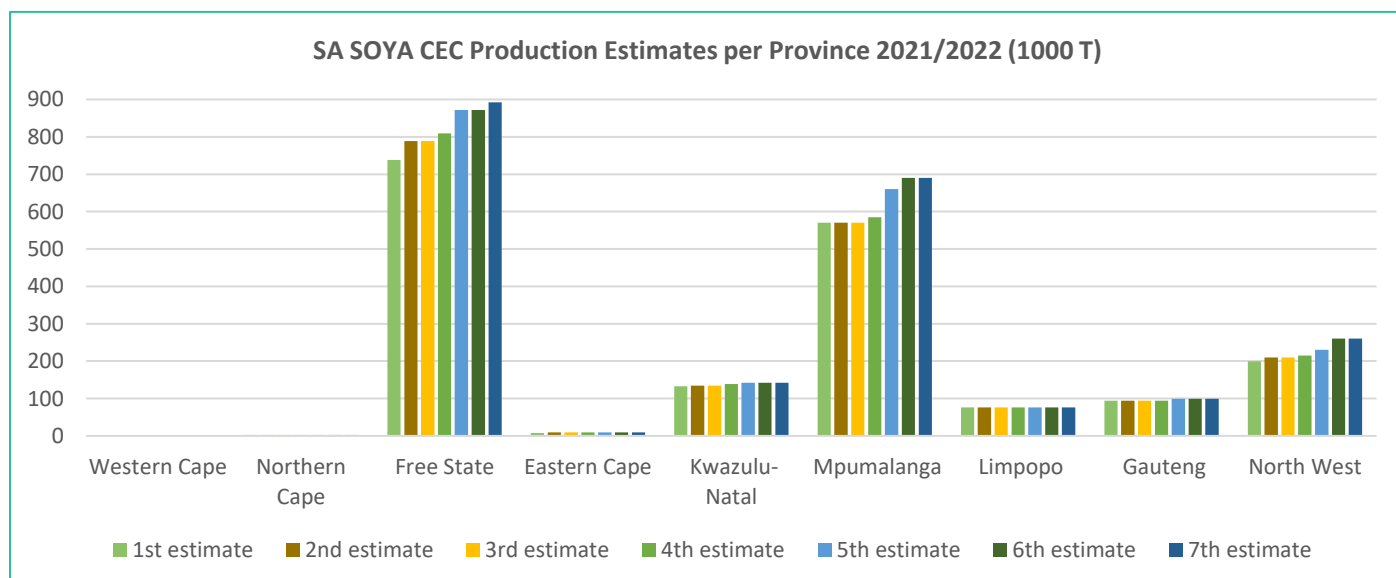
SOYBEANS	SUNFLOWER	WHITE MAIZE	YELLOW MAIZE	WHEAT
18% Production ↑	4.15% Production ↓	1.35% Production ↑	5.35% Production ↑	2.179 Million Tons Production Forecast

SOYBEAN

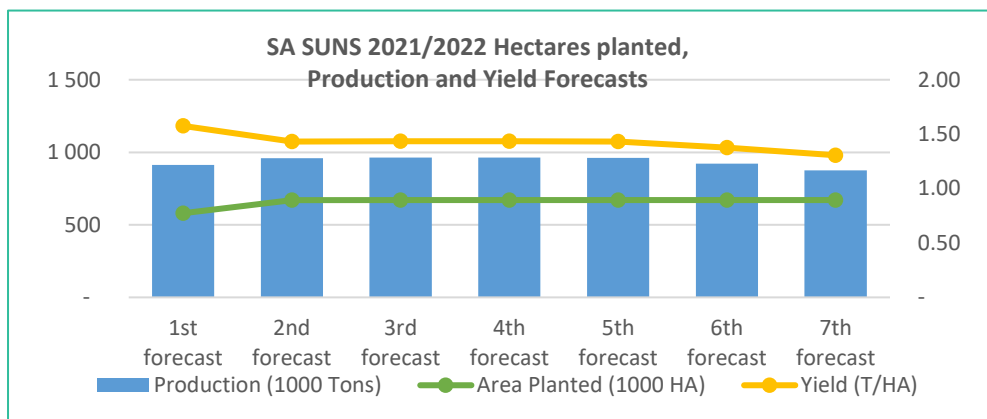
The production forecast for soybeans increased again with the 7th forecast released on 30 August 2022. Since the 1st forecast released on 28 February 2022, the **production forecast increased with 18% (286 250 tons)**. The biggest increase (in tons) came from **Mpumalanga and the North West Province**.



Soybean CEC	Area Planted (1000 HA)	Production (1000 Tons)	Yield (T/HA)
1st intention	925		
2nd intention	910		
1st forecast	915	1 821	1.99
2nd forecast	925	1 886	2.04
3rd forecast	925	1 886	2.04
4th forecast	925	1 931	2.09
5th forecast	925	2 091	2.26
6th forecast	925	2 151	2.33
7th forecast	925	2 172	2.35

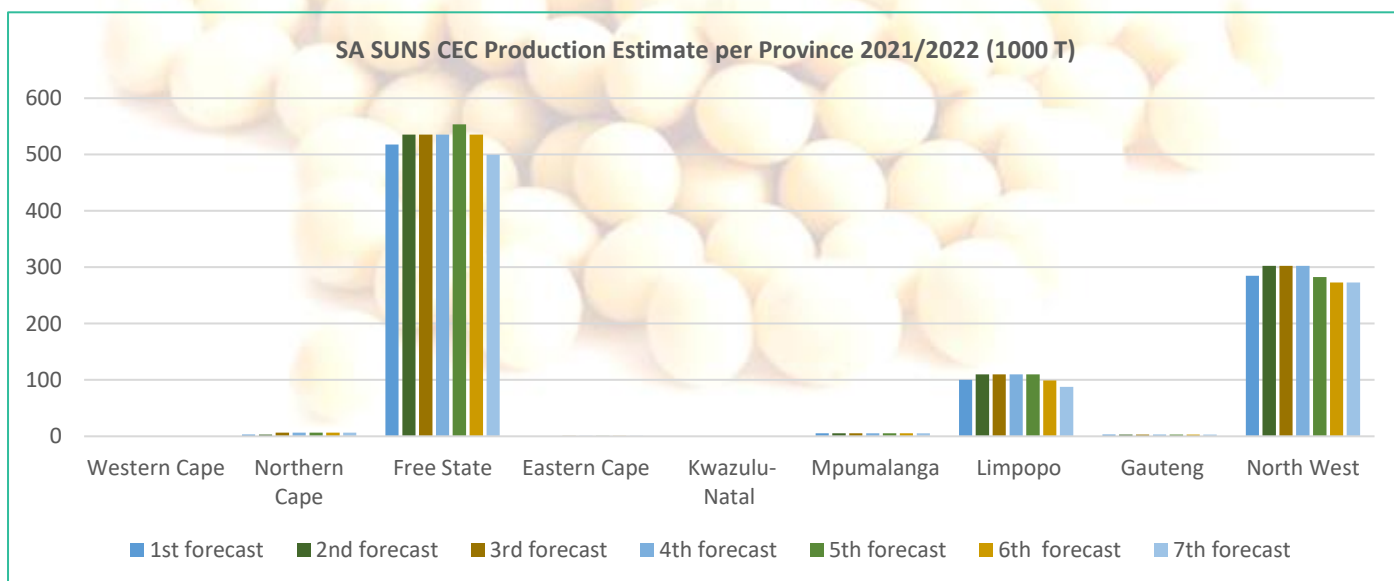
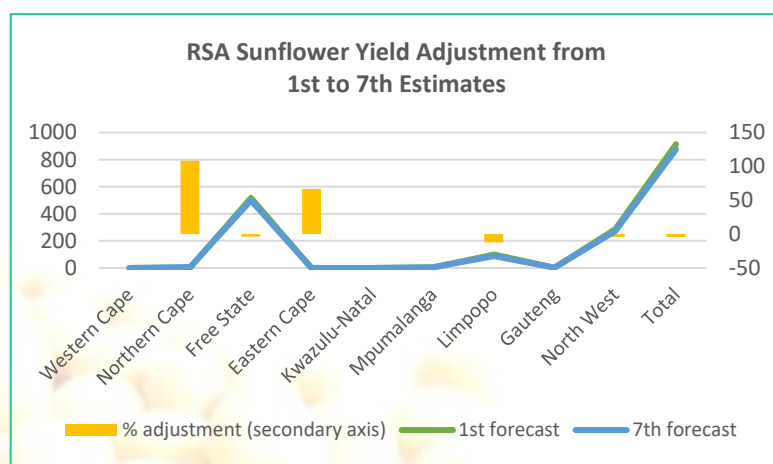


SUNFLOWER

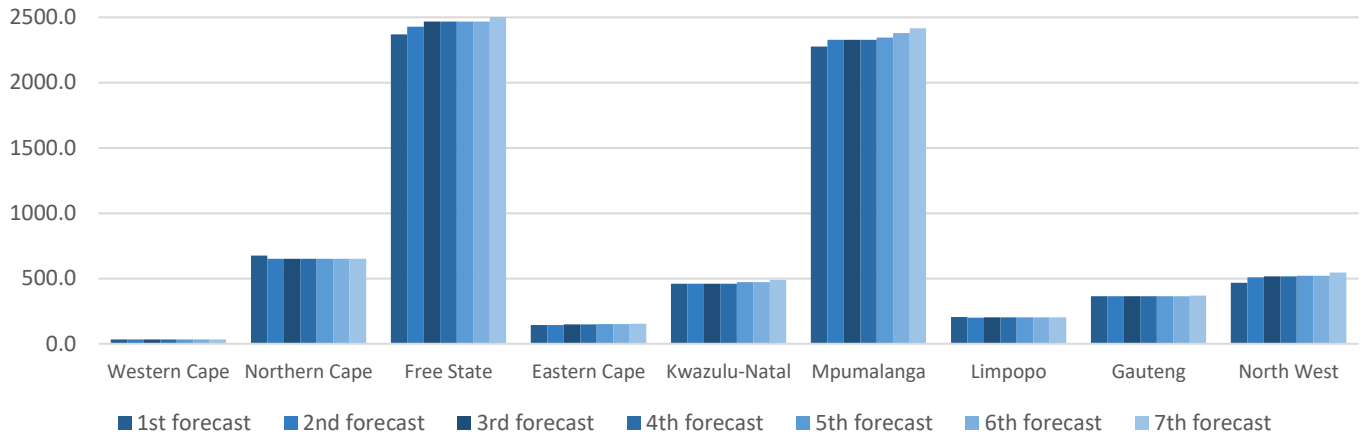


The production forecast for sunflowers increased from the 1st to the 3rd estimate with 5.36% (49 000 tons) earlier this year, but started decreasing again up to the 7th estimate with 9.03% (86 950 tons). The biggest decrease (in tons) came from the Free State, Limpopo and the North West Province.

Sunflower CEC	Area Planted (1000 HA)	Production (1000 Tons)	Yield (T/HA)
1st intention	655		
2nd intention	555		
1st forecast	580	914	1.58
2nd forecast	670	959	1.43
3rd forecast	671	963	1.44
4th forecast	671	963	1.44
5th forecast	671	961	1.43
6th forecast	671	923	1.38
7th forecast	671	876	1.31



SA YMAZ CEC Production Estimates per Province 2021/2022 (1000 T)



WINTER CEREALS 1st FORECAST

CROP	Area planted/ 2022	1 st forecast 2022	Area planted 2021	Final Crop 2021	Change
	Ha	Tons	Ha	Tons	%
	(A)	(B)	(C)	(D)	(B) ÷ (D)
Wheat	560 100	2 178 935	523 500	2 285 000	-4,64
Barley	101 000	370 350	94 730	334 000	+10,88
Canola	123 360	197 880	100 000	198 100	-0,11
Oats	28 150	43 880	36 250	59 000	+7,16
Sweet lupines	21 000	21 000	22 000	28 600	-26,57

